

SFU

SIMON FRASER
UNIVERSITY

ENGAGING THE WORLD



SFU Lifelong Learning
Community Report
2015/2016

**CONNECTING
SIMON FRASER UNIVERSITY
WITH THE COMMUNITY
FOR 45 YEARS**

CELEBRATING THE PAST, PLANNING FOR THE FUTURE

For all of us at Simon Fraser University, 2015/2016 was a special year as we celebrated the University's 50th anniversary, reflected on our accomplishments and planned for future growth.

At Lifelong Learning, we marked our own milestone: 45 years since the creation of Continuing Studies at SFU. We're proud that since its early days the University has demonstrated commitment to supporting mature, marginalized and other non-traditional learners.

Decades later, we continue to deliver learner-focused flexible and applied education developed in partnership with experts from across SFU and a wide variety of sectors and fields.

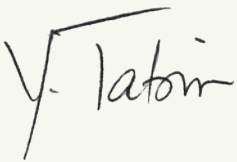
The year 2015/2016 was another period of growth for us. We developed five new non-credit professional certificate programs and we transitioned dozens of face-to-face credit and non-credit courses to online delivery. These activities attracted and inspired hundreds of students and expanded the University's reach across the country.

Working in close partnership with SFU faculties, we delivered 88 evening and weekend undergraduate courses through SFU NOW: Nights or Weekends. Our Centre for Online and Distance Education offered 356 online undergraduate, graduate and non-credit courses. In Continuing Studies, our offerings included over 30 non-credit programs and 411 courses. Working with community partners, we organized 327 free events at SFU campuses and across Metro Vancouver.

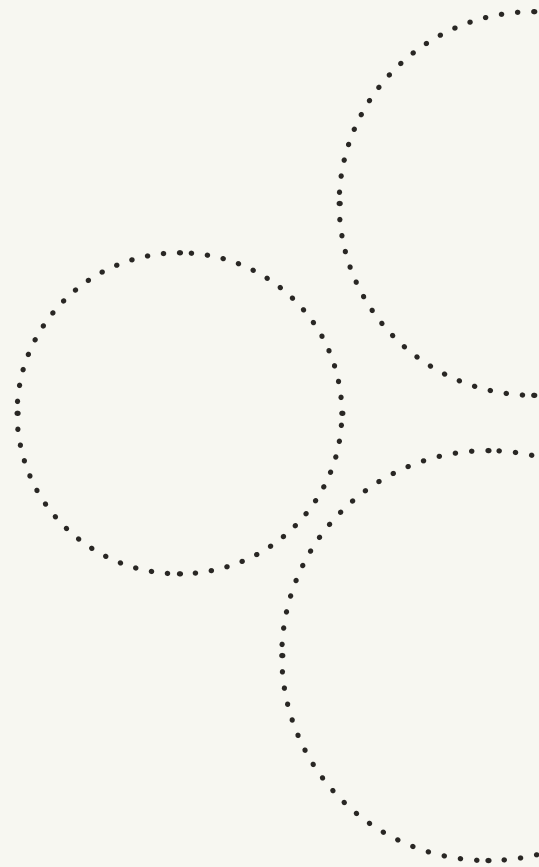
These efforts resulted in 15% growth over the previous year in non-credit enrollments and 60% growth in the number of free and sponsored community event registrations.

We are pleased with what we accomplished in 2015/2016 and we look forward to continuing to serve our communities by delivering accessible, flexible and experiential learning opportunities.

Sincerely,



Dr. Yvonne Tabin
Dean Pro Tem
SFU Lifelong Learning



SFU LIFELONG LEARNING

Since 1971, we've been providing academic programming that allows students to achieve their intellectual, professional and cultural goals through learning opportunities that build on the strengths and academic capital of the University and the resources of the community.

VICE-PRESIDENT ACADEMIC AND PROVOST

LIFELONG LEARNING

A central unit formed in 1971
to develop new academic programs
and to improve the accessibility
of Simon Fraser University
to the community

DEGREE COMPLETION/ CREDIT

Aboriginal University
Transition Programs

Centre for Online and
Distance Education

SFU NOW: Nights or Weekends

CONTINUING STUDIES/ NON-CREDIT

Career and Professional
Programs

City Program

English Language and Culture
Program

Interpretation and
Translation Program

COMMUNITY ENGAGEMENT

Community Education Program

Creative Writing Program

Liberal Arts and 55+ Programs

Philosophers' Café

2015/2016 ENROLLMENT

In cooperation with SFU faculties and departments, we offer part-time degree completion, online and distance education and continuing education programs. We also engage the community through a variety of learning and growth opportunities.

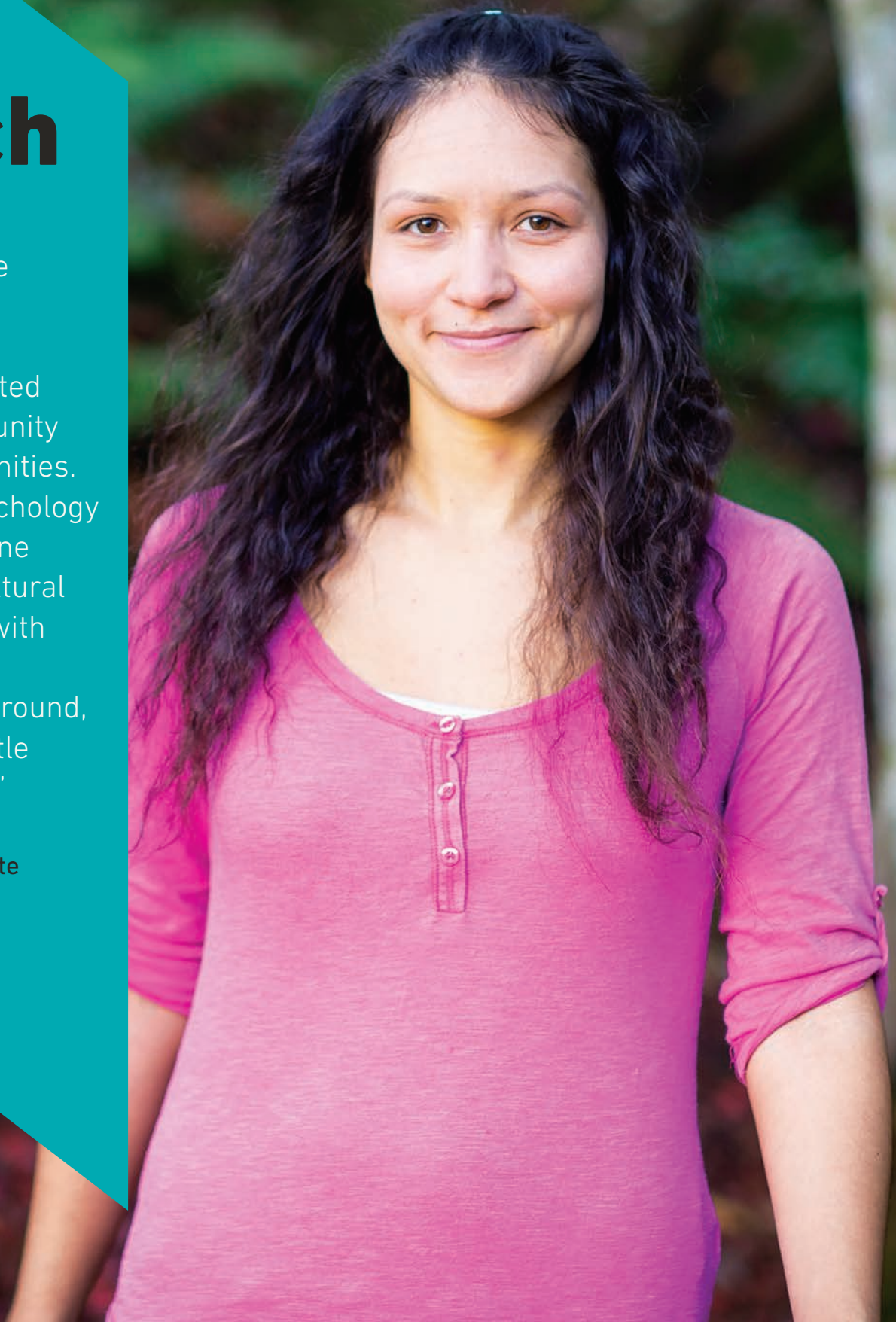
PROGRAM	Fee-Based Registrations	Free and Sponsored Registrations
DEGREE COMPLETION/CREDIT		
Aboriginal University Transition Programs	86	
Centre for Online and Distance Education	17,228	
SFU NOW: Nights or Weekends	2,191	
CONTINUING STUDIES/NON-CREDIT		
Career and Professional Programs	5,647	3,267
City Program	394	4,414
English Language and Culture Program	796	
Interpretation and Translation Program	218	
International Teaching Assistants Program	66	
COMMUNITY ENGAGEMENT		
Community Education Program	403	150
Creative Writing Program	770	1,843
Liberal Arts and 55+ Programs	4,866	1,538
Philosophers' Café		2,734
Total Credit and Non-Credit Enrollment	32,665	13,946



Sara French

"I wanted to go to university because I have a daughter, and I wanted to support her. I wanted to help my community and other communities. I am studying psychology and plan to combine traditional and cultural ways and values with my mainstream educational background, so I can bring a little from both worlds."

Aboriginal University
Prep Program Graduate



DEGREE COMPLETION

Pursuing a dream career. Qualifying for a promotion. Starting a family. These are some of the many reasons why students need flexible education options available through our SFU NOW: Nights or Weekends program and the Centre for Online and Distance Education (CODE).

Some learners face barriers beyond work and family responsibilities. Committed to seeing more Aboriginal students graduate from SFU, we help First Nations, Métis and Inuit students prepare for university in a supportive and culturally relevant environment.

In 2015/2016, we continued to partner with SFU faculties to deliver educational formats and programs that serve the needs of mature learners, working professionals and Aboriginal students.

CONVENIENT

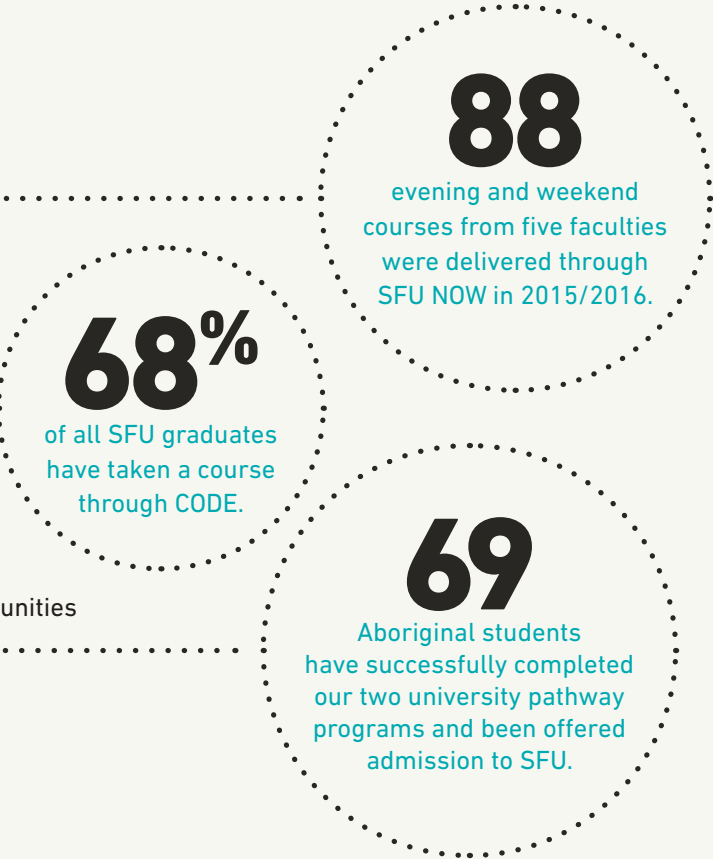
scheduling for mature and non-traditional learners

FLEXIBLE

opportunities through online and distance learning

ACCESSIBLE

pathways to the University for under-represented communities



CONTINUING STUDIES

Our part-time and intensive non-credit programs give learners the applied knowledge and practical skills they need to prepare for a new career or advance in their chosen field. Most of our programs include a practicum, fieldwork or other experiential learning component to further develop our students' professional skills under the guidance of industry experts.

In 2015/2016, almost 5,800 students took Continuing Studies courses, with 558 of them completing a full certificate or diploma program.

CAREER-FOCUSED

knowledge and skills training for students developing or transitioning in their professional life, while affording them the time to have a personal life

EXPERIENTIAL

and applied learning opportunities for certificate and diploma students

RELEVANT

and practical curriculum attracts and inspires mid-career professionals who want to succeed in an ever-changing world

80%

of our Public Relations Certificate graduates found employment in the PR field within six months of graduation.

100

students completed practicums in six different Continuing Studies certificate programs in 2015/2016.

40

is the average age of students in our professional development courses and programs.



Elvio **Pecchia**

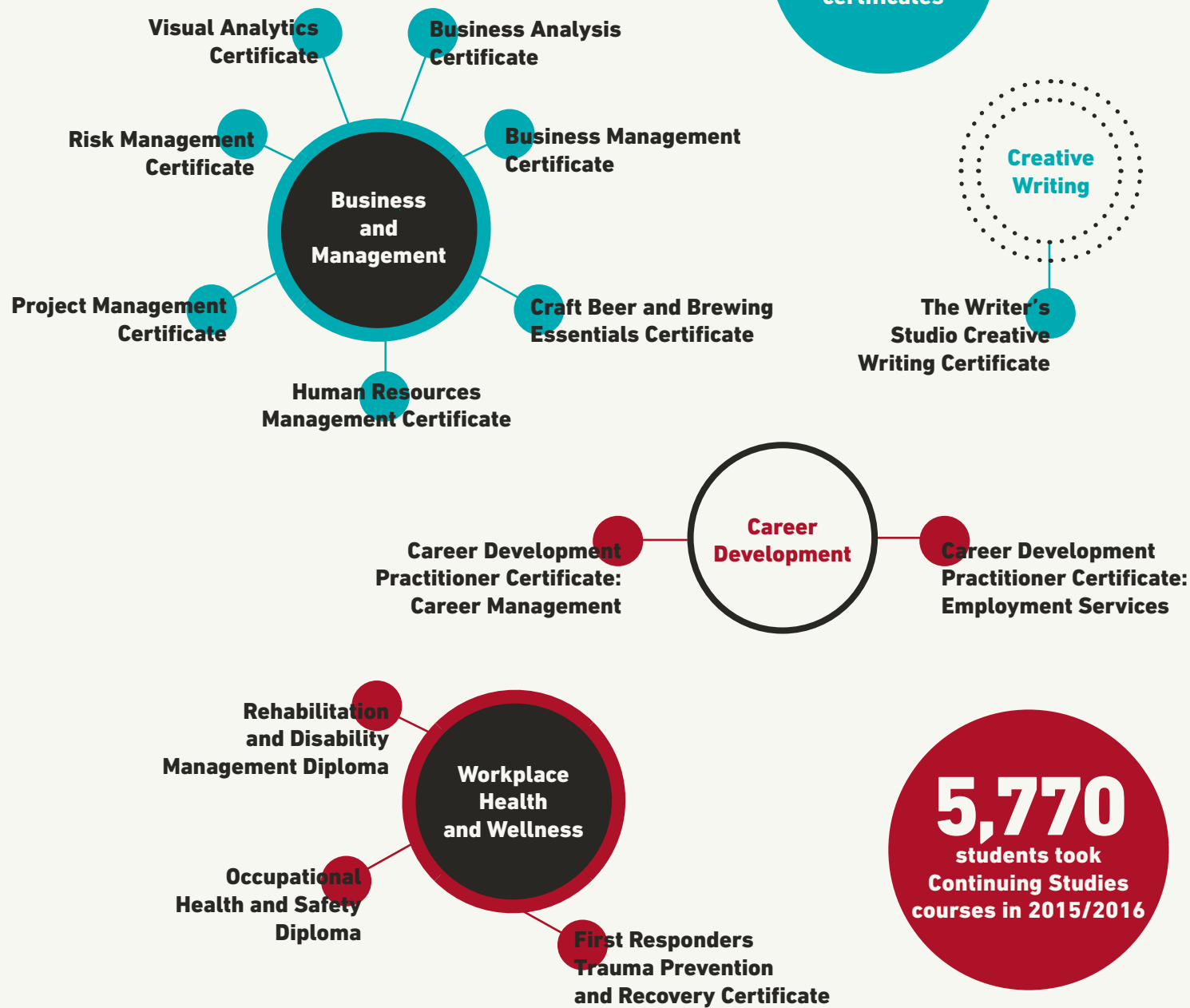
"You're never too old to learn. The environment changes; business models change. Continuous learning is very vital for people who want to be successful, and are interested in promotions, and interested in enriching their lives."

Business Management
Certificate Graduate

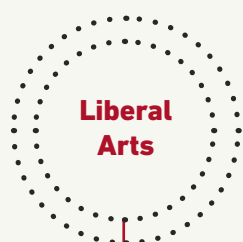
CONTINUING STUDIES PROGRAMS

We offer 28 non-credit certificates and three diploma programs, all approved by the SFU Senate Committee on Continuing Studies.

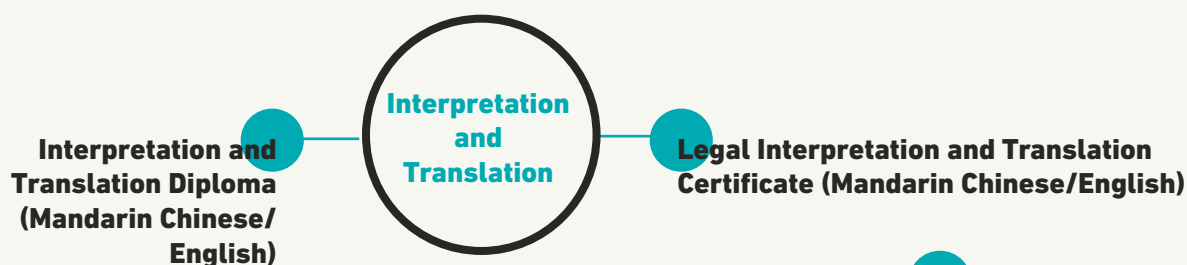
In 2004, SFU became the first university in Canada to offer alumni status and benefits to non-credit certificate and diploma graduates. In 2015/2016, over 550 Continuing Studies program graduates joined the ranks of 135,000 SFU alumni worldwide.



3
diplomas



Liberal Arts Certificate for Adults 55+



550
graduates joined the ranks of 135,000 SFU alumni worldwide in 2015/2016





Arleen Paré

"The Writer's Studio was a gateway to the west coast writing community. It was the starting place; without it I would never have met so many fine writers or made such fine connections."

The Writer's Studio Graduate,
Winner of the Governor
General's Literary Award
for Poetry



COMMUNITY ENGAGEMENT

Community engagement is at the heart of what we do. Our partnerships with organizations and individuals span a variety of sectors, industries and professional networks. These collaborations result in professional and personal growth opportunities for lifelong learners, as well as dialogue among thoughtful citizens who want to build a stronger civil society.

In 2015/2016, we partnered with over 20 community and professional organizations and over 60 local employers.

DIVERSE

community engagement initiatives that provide access to SFU experts and resources

327

free and sponsored community events in 2015/2016 attracted almost 14,000 registrations.

INCLUSIVE

of students of all ages and backgrounds

400

learners in our Adults 55+ program are between the ages of 76 and 96.

CONNECTED

to community members and partners

126

aspiring writers participated in our one-on-one creative writing manuscript consultations hosted by six Metro Vancouver and Whistler public libraries in 2015/2016.

ENDOWMENTS

The endowments we manage support the quality and quantity of Lifelong Learning activities and are possible through the generosity of the community. These activities impact thousands of people locally, nationally and internationally.

FUNDS ADJUDICATED BY LIFELONG LEARNING

Community Partnership Fund

This important endowment allows us to provide communities and low-income individuals in the East Vancouver area, the Downtown Eastside, and any inner-city community related to SFU with more opportunities to become economically self-sufficient. The fund supported these events in 2015/2016:

Downtown Eastside Boot Camps

In partnership with Union Gospel Mission of Vancouver, our Career and Professional Programs offered a series of one-day boot camps providing educational and skill development opportunities to approximately 3,200 participants from Union Gospel Mission's Alcohol and Drug Recovery Program, as well as front-line staff from more than 30 Downtown Eastside social service agencies.

Thursdays Writing Collective "Sustain and Nourish" Initiative

In collaboration with a variety of community partners, the Writer's Studio (our Creative Writing program) supported this 10-month program that examined community bonds through the lens of food, food safety, traditions and policy. Carnegie Centre participants wrote about topics ranging from dumpster diving to food deserts to traditional family feasts, empowering them to connect with the literary community and develop writing skills.

The David and Cecilia Ting Endowment for Education for Public Responsibility

This valuable endowment supports an annual lecture or special seminar in public affairs education or leadership development. It also supports the School of Criminology Ting Forum on Justice Policy and Lifelong Learning's Interpretation and Translation Program. The 2015/2016 funds supported the following public forums:

Solutions and YOU: Combating Climate Change Lecture and Discussion Series

Leading up to the 2015 United Nations Climate Change Conference (COP21) in Paris, this series brought together top international experts and used a variety of lenses to clarify and discuss the multifaceted challenges of addressing the impacts of climate change.

Engagement Practitioner Series

In collaboration with other SFU departments, our Community Education Program organized two events for the Skillful Engagement Series that facilitated knowledge transfer, built community and contributed to leadership capacity among engagement practitioners.

THE SALVATION ARMY DEVELOPMENT ENDOWMENT FUND

Administered by our Community Education Program, this \$3.3-million endowment fund was established in 1989 by a gift from the late Dr. J.L. Wighton to assist Salvation Army officers and personnel with pursuing advanced educational opportunities.

In 2015/2016, the fund supported participation of Salvation Army officers and staff in our Restorative Justice Certificate, as well as development of our new Non-Profit Management Certificate and our new Executive Leadership Certificate. These initiatives, as well as future work with the Salvation Army of Canada, have the potential to benefit thousands of Canadians through the increased capacity of Salvation Army employees and non-profit professionals throughout the country.

PROGRAM ENDOWMENTS

Several organizations have also created endowments to support the work of specific program areas within Lifelong Learning.

The City Program Endowment Fund

This fund was established in 1995 through a lead grant from the Real Estate Foundation of British Columbia and subsequent grants from the Earl and Jennie Lohn Foundation; VIA Architecture, Inc.; and the Ministry of Community,



Aboriginal and Women's Services. The fund's mandate is to support our City Program's activities, including courses, programs and lectures on land-use and urban issues.

The Annie Watson Bursary Fund

This fund was established in 2011 with the help of the family of the late Annie Watson, a student of our Adults 55+ Program. The goal of this discretionary fund is to provide financial support for those who cannot otherwise participate in the program.

The Seniors Program Directors Endowment Fund

This fund was established in 2010 by a generous bequest from the late Alan Aberbach to support staff salaries and related Adults 55+ Program administrative activities and to ensure that courses for adults 55+ continue and expand.

The Seniors Program Endowment Fund

This fund was established in 2000 by members of the SFU Opsimath Club (Seniors Lifelong Learners Society) to support program operations and ensure that courses for adults 55+ continue and expand.

FINANCIAL REPORT

We completed the fiscal year 2015/2016 in good financial standing due, in large part, to higher than expected non-credit enrollments and prudent financial management.

In October 2015, SFU approved SERA, Lifelong Learning's non-credit student information system, as the official centralized system for all non-credit activities offered by the University. Lifelong Learning received additional funding from the University to support this initiative, which accounts for the \$187,986 increase in board-approved funding.

Actual non-credit and other revenues exceeded the budget by \$192,844 due to higher enrollments in English Language and Culture and other non-credit programs. Prudent financial management resulted in cost savings of \$370,339 in both salaries (due to delayed hiring) and operating expenses.

COMMUNITY IMPACT

A considerable amount of our resources is committed to helping achieve SFU's vision of community engagement. For example, we dedicated over \$200,000 in 2015/2016 to delivering hundreds of free events to thousands of community members at SFU campuses and beyond.

In addition to free community engagement initiatives, we've helped the University maintain and expand its community connections through education partnerships, practicum placements and advisory committees.

Year Ending March 31, 2016. Unaudited Condensed Financial Statement

	2015/2016 Budget	2015/2016 Actuals	Variance
Revenue			
Board-Approved Funding	\$8,656,527	\$8,844,513	\$187,986
Non-Credit and Other Revenue	\$8,274,389	\$8,467,233	\$192,844
Total Revenues	\$16,930,916	\$17,311,746	\$380,830
Total Expenses	\$16,699,421	\$16,329,082	\$370,339
Surplus/(Deficit)	\$231,495	\$982,664	\$751,169

UNIVERSITY IMPACT

Not reflected in the financial statement above is our indirect contribution to the University of over \$19.5 million in 2015/2016.

Online credit course offerings through the Centre for Online and Distance Education (CODE) and face-to-face offerings through the Centre for Integrated and Credit Studies (CICS) generated over \$13.7 million in tuition

revenue. In addition, over \$5.8 million was contributed through differential tuition fees paid by international students (see Table 1).

We also made financial contributions of \$729,199 through University space and equipment rental payments (see Table 2).

Table 1: Credit Enrollment Revenue

Lifelong Learning's financial contributions to the University through credit enrollments offered online, through SFU NOW: Nights or Weekends, and extension credit courses at SFU's Vancouver campus

	Enrollments	Activity FTEs	Weighted Activity FTEs	Tuition Fees
Centre for Integrated and Credit Studies*	6,254	727.3	1,033.8	\$3,860,862
Centre for Online and Distance Education	17,228	1,863.2	2,292.9	\$9,850,625
Total Benefits	23,482	2,590.5	3,326.7	\$13,711,487
International Tuition Differential				\$5,821,292
Total Benefits with International Tuition Differential				\$19,532,779

*Includes SFU NOW: Nights or Weekends and credit enrollment at SFU's Vancouver campus

Table 2: Space and Equipment Rentals

Lifelong Learning's contributions to the University through space and equipment rental

Location	Rent Paid
SFU's Vancouver Campus—variable classroom space	\$339,716
SFU's Vancouver Campus—fixed classroom space	\$85,332
SFU's Surrey Campus—fixed rent	\$70,000
Surrey City Centre Library—fixed rent	\$66,133
Audio-Visual Equipment—variable	\$168,018
Total Paid to University	\$729,199

ADVISORY COMMITTEES

Building connections between SFU and the community, our advisory committees bring some of the best minds together to craft programs informed by University expertise and community needs. We are grateful for the commitment and contributions of our advisors.

In 2015/2016, the following committees met to advise on the programs' curricula and to help ensure the academic integrity, high quality and relevance of our offerings.

CAREER AND PROFESSIONAL PROGRAMS

Craft Beer and Brewing Essentials Certificate Advisory Committee

Rick Dellow, Co-owner, R&B Brewing

Uwe Kreis, Senior Lecturer, Department of Chemistry

Gary Lohin, Brewmaster, Central City Brewers and Distillers

Don Moore, Western Sales Specialist,
Canada Malting Company

Zamir Punja, Professor, Department of Biological Sciences

Tristan Warren, Operations Manager,
Central City Brewers and Distillers

Larry White (Chair), Director,
Career and Professional Programs

Joe Wiebe, Author/Journalist

Career and Life Planning Advisory Committee

Anne-Kristina Arnold (Chair), Occupational Ergonomics
Certificate; Senior Lecturer, Department of Biomedical
Physiology and Kinesiology

Tony Botelho, Director, Career Services and
Volunteer Services

Susan Chow, District Principal, Career Education Department,
Surrey School District

Kon Li (Chair), Associate Director, Career and Life Planning,
Career and Professional Programs

David Paterson, Associate Dean, Administration; Coordinator,
Graduate Counselling Program, Faculty of Education

Larry White, Director, Career and Professional Programs

Marketing and Communications Advisory Committee

Jonathan Becker, Consultant

Amanda Haines, President, Reformation PR

Duncan Kent, Principal, Duncan Kent and Associates, Ltd.

Vlad Konieczny, Consultant

Gary Mason, Columnist, The Globe and Mail

Gary McCarron, Associate Professor,
School of Communication

Fawn Mulcahy, Head, Major Sponsors, RBC

Natasha Netschay Davies, Consultant

Elizabeth Rains, Editor and Publisher, Ocean Cove Media

Daniel Savas, Adjunct Professor, School of Public Policy

Richard Smith, Professor, School of Communication; Director,
Master of Digital Media Program, Centre for Digital Media

Peter Walton (Chair), Associate Director, Marketing and
Communications, Career and Professional Programs

CENTRE FOR ONLINE AND DISTANCE EDUCATION

SFU Publications Board

Wayde Compton, Program Director,
The Writer's Studio

Elaine Fairey, Associate University Librarian

Robert Gordon, Professor, Associate Dean,
Faculty of Arts and Social Sciences



Brian Naicker, Director, Centre for Online and Distance Education

John Whatley (Chair), Program Director, Centre for Online and Distance Education; Associate Member, Department of English; Associate Member, School of Criminology

CITY PROGRAM

Next-Generation Transportation Certificate Advisory Committee

Tim Barton, Transportation Planner, Bunt and Associates Engineering

Dale Bracewell, Manager, Active Transportation, City of Vancouver

Andrew Curran, Manager, Strategy, Strategic Planning and Policy, TransLink

Jane Farquharson, Principal, Bunt and Associates Engineering

Lawrence Frank, Professor, Director, Health and Community Design Lab, UBC

Claire Gram, Policy Analyst, Vancouver Coastal Health

Tom Lancaster, Planner, VIA Architecture

Clark Lim, Principal, Acuere Consulting Inc.

Todd Litman, Executive Director, Victoria Transport Policy Institute

Margaret Mahan, Executive Director, Better Environmentally Sound Transportation

Kobus Mentz, Director, Urbanismplus

Brian Patterson, Principal, Active Transportation Planning Leader, Urban Systems

Anthony Perl, Professor, Urban Studies Program; Professor, Department of Political Science

Gordon Price (Chair), Program Director, City Program

Tamim Raad, Director, Strategic Planning and Policy,
TransLink

Joe Sulmona, Principal, Sky Blue Sea Enterprises Ltd.

Jeffrey Tumlin, Principal, Director of Strategy,
Nelson\Nygaard Consulting Associates

Greg Vann, Director, Buckley Vann Town Planning Consultants

COMMUNITY EDUCATION PROGRAM

Aboriginal University Transition Programs Advisory Committee

Jennie Blankinship, Indigenous Recruitment Coordinator

Felix Breden, Professor, Department of Biological Sciences

Marcia Guno, Director, Indigenous Student Centre

Lee Hanlan, Senior Lecturer, Associate Chair,
Department of Chemistry

Ronald Johnston, Director, Office of Indigenous Education,
Faculty of Education

Veselin Jungic, Associate Chair, Department of Mathematics;
Deputy Director, Interdisciplinary Research in the
Mathematical and Computational Sciences (IRMACS) Centre

Mary-Ellen Kelm, Associate Professor,
Canada Research Chair, Department of History;
Associate Dean, Graduate Studies

Rummana Khan Hemani, Registrar (Acting);
Senior Director, Student Success and Strategic
Support, Student Services

Malcolm King, Scientific Director, CIHR Institute of Aboriginal
Peoples' Health; Professor, Faculty of Health Sciences

Louise Legris, Director, Undergraduate Admissions

William Lindsay, Director, Office for Aboriginal Peoples

John O'Neil, Dean, Faculty of Health Sciences

Susan Praseuth, Manager, Strategic Student Populations

Deanna Reder, Associate Professor, Department of First
Nations Studies; Associate Professor, Department of English

Susan Rhodes, Director, University Curriculum
and Institutional Liaison

Annette Santos, Director, Student Engagement and Retention

Judy Smith (Chair), Director, Community Education Program

Eleanor Stebner, Associate Professor,
J.S. Woodsworth Chair, Humanities Department

Malcolm Steinberg, Program Director, Public Health
Practice, Faculty of Health Sciences; Director,
Graduate Programs, MPH Program

Ken D. Wong, Undergraduate Admissions,
Student Services

Natalie Wood-Wiens, Program Coordinator, Community
Education Program

Eldon Yellowhorn, Chair, Department of First Nations Studies;
Associate Professor, Department of Archaeology

Executive Leadership Certificate Advisory Committee

Peter Boothroyd, Professor Emeritus,
School of Community and Regional Planning, UBC

Aftab Erfan, Adjunct Professor, School of Community and
Regional Planning, UBC

Julian Griggs, Principal, Dovetail Consulting

Suzanne Hawkes, Principal, Convergence Strategies

Shauna Jones, Lecturer, Beedie School of Business

David Paterson, Associate Dean, Faculty of Education

Susan Petrina, Founding Partner, Petrina and Partners

Kelly Pollack, Executive Director, Immigrant Employment
Council of BC

Catherine Roome, CEO and President, BC Safety Authority

Deanne Schweitzer, Senior Vice-President (former),
Lululemon Athletica; Private Consultant and Coach

Judy Smith (Chair), Director, Community Education Program



Delyse Sylvester, Director Communications,
The Natural Step

Shauna Sylvester, Director, Centre for Dialogue

Restorative Justice Certificate Advisory Committee

Shanthi Besso (Chair), Associate Director,
Community Education Program

Martha Brown, Lead Instructor, Restorative Justice Certificate;
Adjunct Professor, Florida Atlantic University

Brenda Morrison, Director, Centre for Restorative Justice;
Associate Professor, School of Criminology

Judy Smith, Director, Community Education Program

Social Innovation Certificate Advisory Committee

Joanna Ashworth, Senior Associate, Centre for Dialogue;
Director, Professional Development, Faculty of Environment

Shanthi Besso (Chair), Associate Director,
Community Education Program

Tim Draimin, Executive Director, Social Innovation Generation
(SiG) National

Al Etmanski, Faculty, John McKnight's Asset-Based
Community Development Institute (ABCD); Co-Founder,
Planned Lifetime Advocacy Network (PLAN); Ashoka Fellow

Tatiana Fraser, Co-Founder, Past Executive Director,
Girls Action Foundation

Am Johal, Director, Community Engagement,
Vancity Office of Community Engagement

David LePage, Principal, Accelerating Social Impact CCC, Ltd.
(ASI); Chair, Social Enterprise Council of Canada

Sarah Lubik, Director, Entrepreneurship; Lecturer,
Entrepreneurship and Innovation, Beedie School of Business

Blaize Horner Reich, Dean Pro Tem, Beedie School of
Business; RBC Professor, Technology and Innovation

Andrea Reimer, Deputy Mayor, City of Vancouver

Shawn Smith, Adjunct Professor, Founding Director, RADIUS (RADical Ideas, Useful to Society), Beedie School of Business

Delyse Sylvester, President, Social Currents; Executive in Residence, Beedie School of Business

ENGLISH LANGUAGE AND CULTURE PROGRAM

Advisory Committee

Cliff Burgess, Senior Lecturer, Department of Linguistics

Kathleen Graham, Immigrant Services Society of BC; Manager, Language College—LINC

Bertrand Lee, Instructional Coordinator, English Language and Culture Program

Judy Shabtai, Program Coordinator, English Language and Culture Program

Jacqueline Sinclair, Marketing Coordinator, English Language and Culture Program

Judy Smith, Director, Community Education Program

Michele Valiquette, Senior Lecturer, Department of English

Colleen Wood (Chair), Program Director, English Language and Culture Program

INTERNATIONAL TEACHING ASSISTANTS PROGRAM

Advisory Committee

Kumari Beck, ITA Issues Researcher, Assistant Professor, Faculty of Education

Moninder Bubber, Librarian Liaison, Bennett Public Services, SFU Library

Diana Cukierman, Senior Lecturer, School of Computing Science

Mary-Ellen Kelm, Associate Professor, Canada Research Chair, Department of History; Associate Dean, Graduate Studies

Dianne Jamieson-Noel, Program Director, Centre for Online and Distance Education

Steve Marshall, Assistant Professor, Faculty of Education

Wendy Steinberg (Chair), Program Director, International Teaching Assistants Program; Program Director, Interpretation and Translation Program

INTERPRETATION AND TRANSLATION PROGRAM

Advisory Committee

Steven Chang, Alumnus, Diploma in Interpretation and Translation

Cindy Cheng, Translation Coordinator, Provincial Language Services, Provincial Health Services Authority

Winnie Chiang, Head Instructor, Diploma in Interpretation and Translation

Tiffany Lee, Regional Coordinator, Vancouver Law Courts, Justice Education Society of B.C.

Wyn Roberts, Professor Emeritus, Department of Linguistics

Wendy Steinberg (Chair), Program Director, International Teaching Assistants Program; Program Director, Interpretation and Translation Program

LIFELONG LEARNING

Lifelong Learning Endowment Committee

Michael Filimowicz (Chair), Associate Dean, Lifelong Learning

Veselin Jungic, Associate Chair, Department of Mathematics; Deputy Director, Interdisciplinary Research in the Mathematical and Computational Sciences (IRMACS) Centre

Roz Kaplan, Program Director, Liberal Arts and Adults 55+ Programs

Allan MacKinnon, Associate Professor, Faculty of Education

Raveen Sanghera, Associate Director, Business and Management, Career and Professional Programs

Yvonne Tabin, Director, Integrated Credit Studies;
Director, SFU NOW: Nights or Weekends

Senate Committee on Continuing Studies

Lyn Bartram, Associate Professor,
School of Interactive Arts and Technology

Gwen Bird, University Librarian,
Dean of Library Services, SFU Library

Larissa Chen, Student

Rebecca Cox, Assistant Professor,
Faculty of Education

Joanne Curry (Chair), Dean Pro Tem,
Lifelong Learning

Tracey Leacock, Senator at Large

David MacAlister, Associate Director, Planning,
Policy and Procedure, School of Criminology

Colin Percival, Convocation Senator

Peter Ruben, Professor, Associate Dean,
Research and Advancement, Faculty of Science

Stephen Spector, Academic Director, Undergraduate
Business Major, Beedie School of Business

